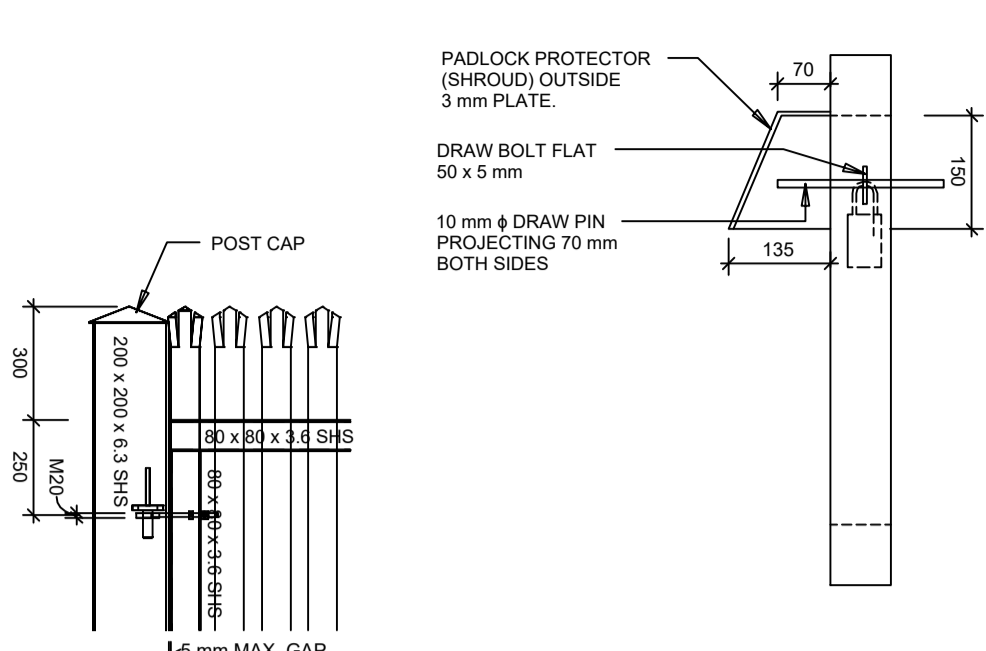
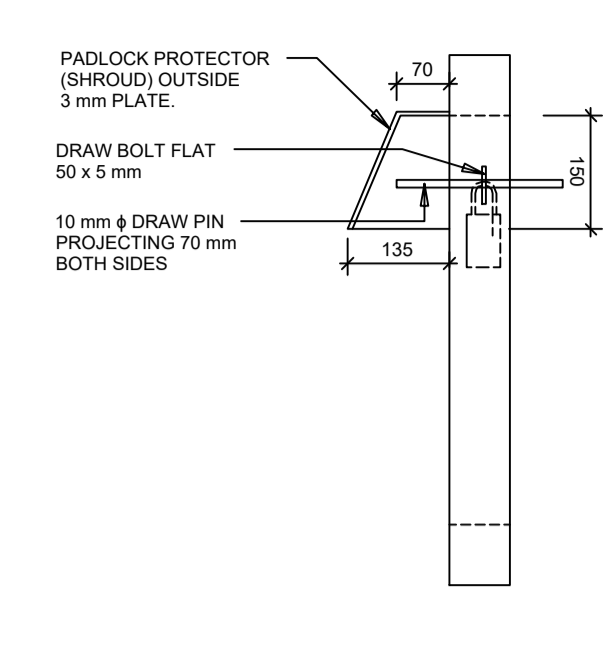


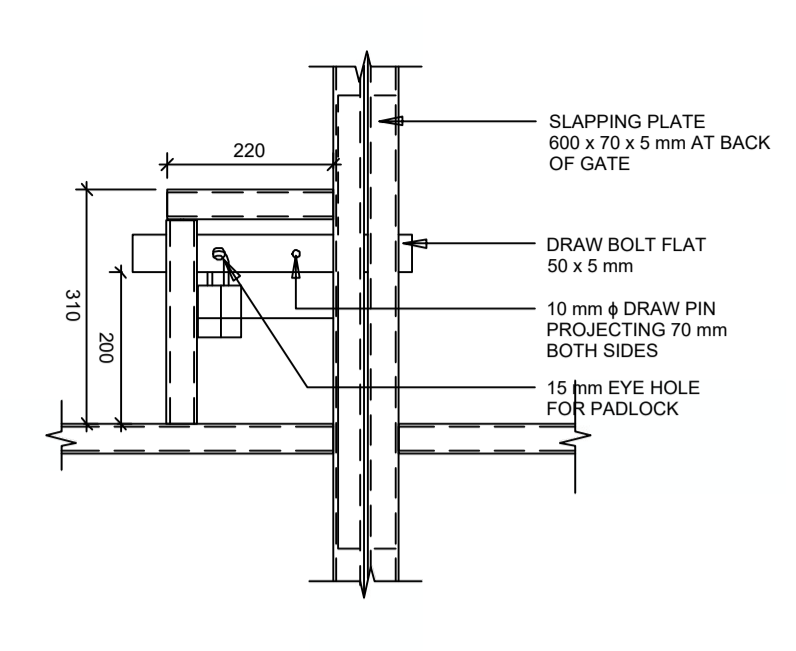
PLAN OF PALISADE GATES
SCALE: 1 : 25



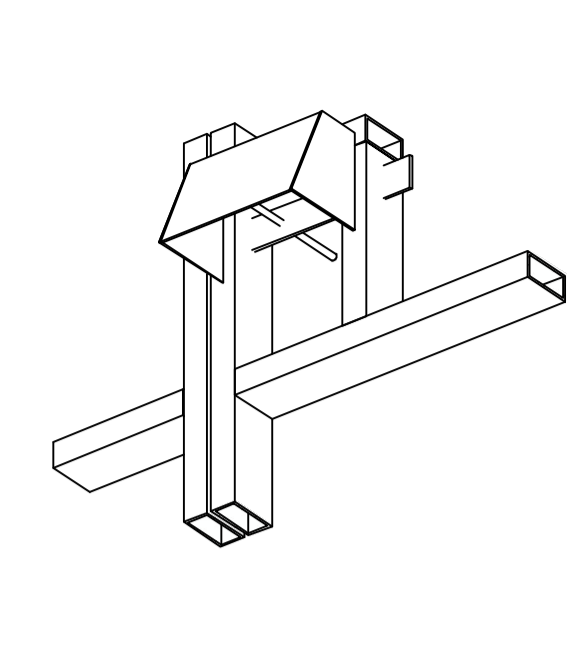
DETAIL 1
SCALE: 1 : 20



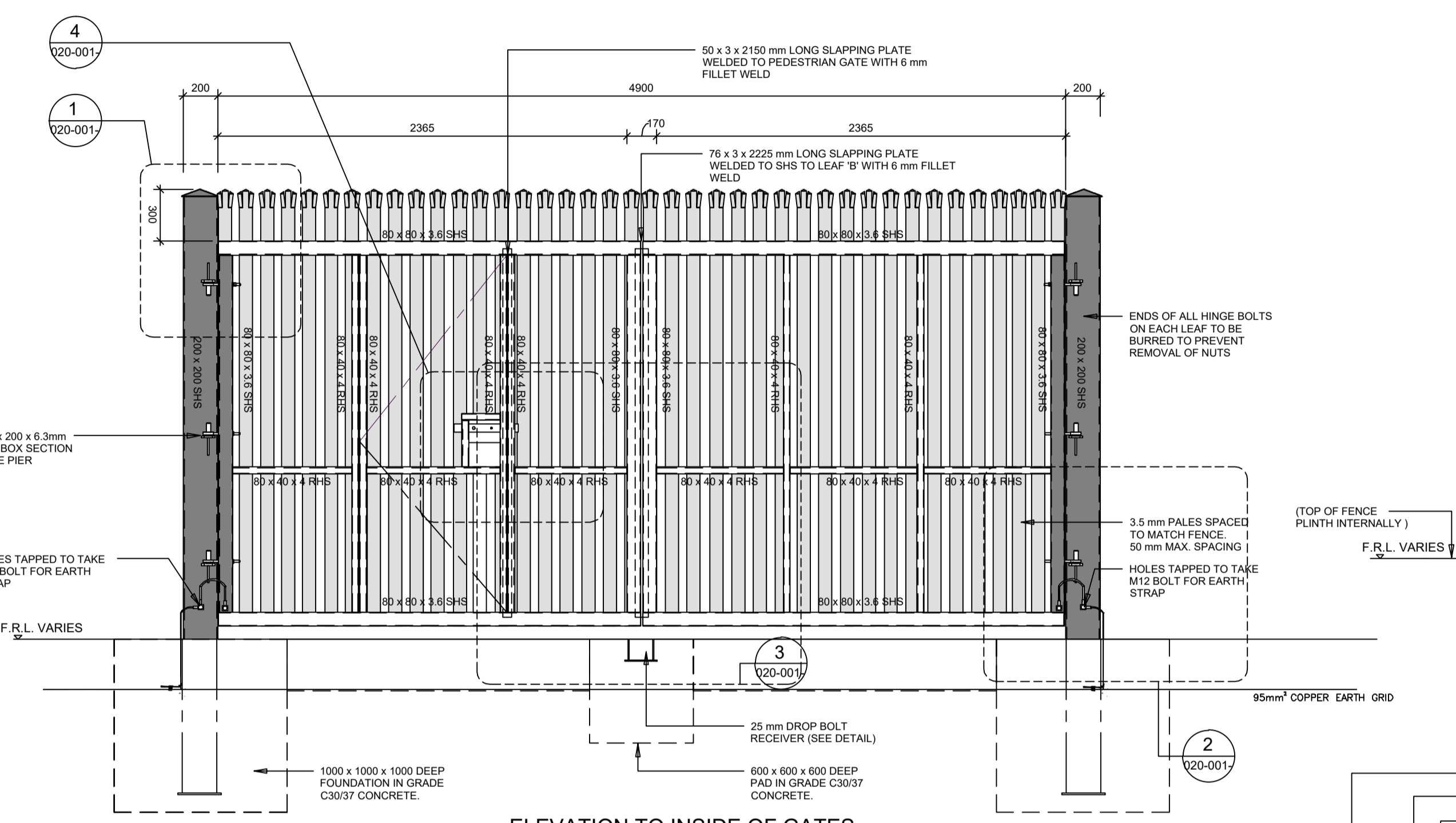
DETAIL 4 - SIDE ELEVATION
SCALE: 1 : 10



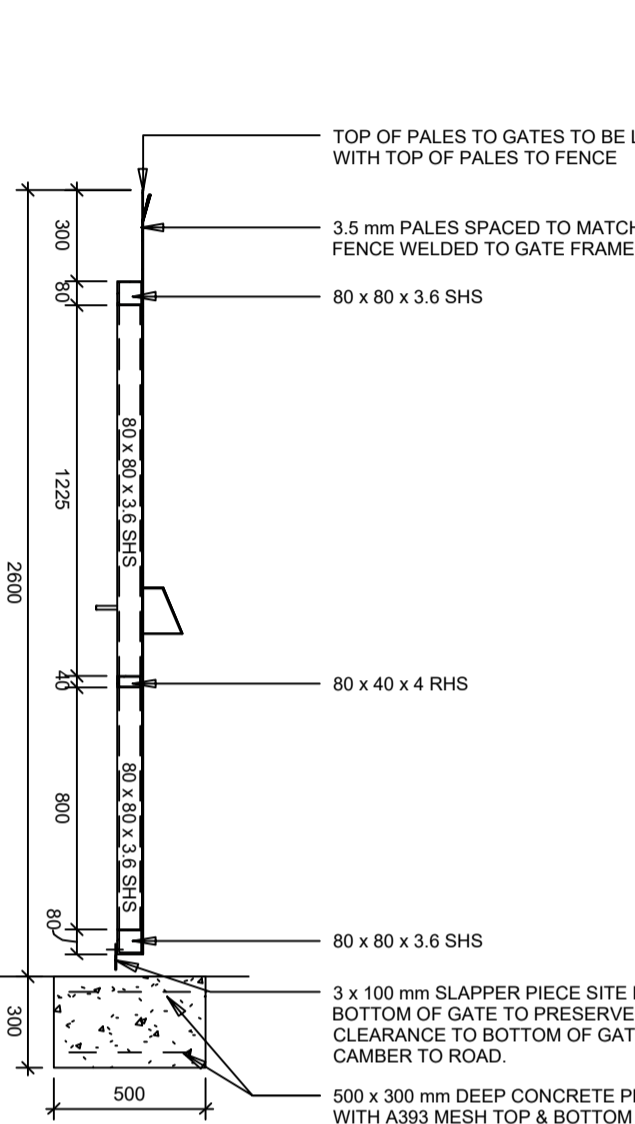
DETAIL 4 - LOCKING ARRANGEMENT ELEVATION
SCALE: 1 : 10



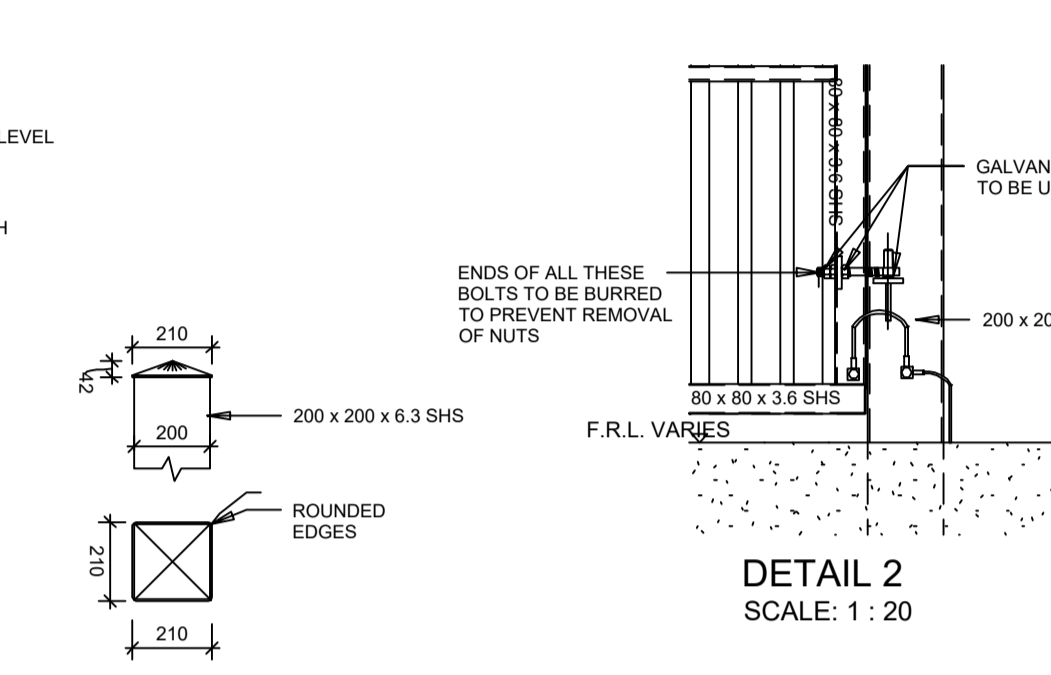
3D VIEW OF PADLOCK PROTECTOR
SCALE: 1 : 10



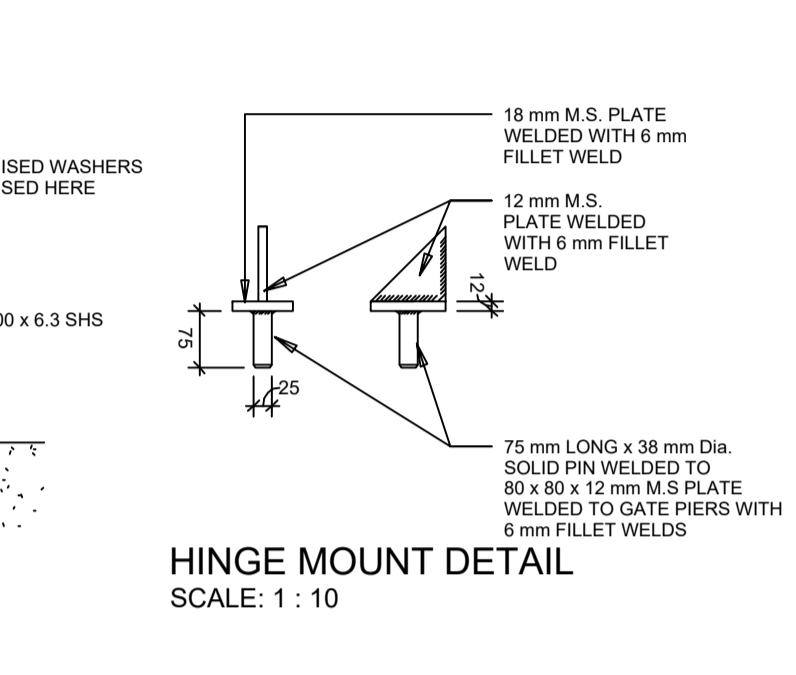
ELEVATION TO INSIDE OF GATES
SCALE: 1 : 25
(NOTE: A.) LOCKING ARRANGEMENT OMITTED FOR CLARITY. SEE DETAIL 2 & 4



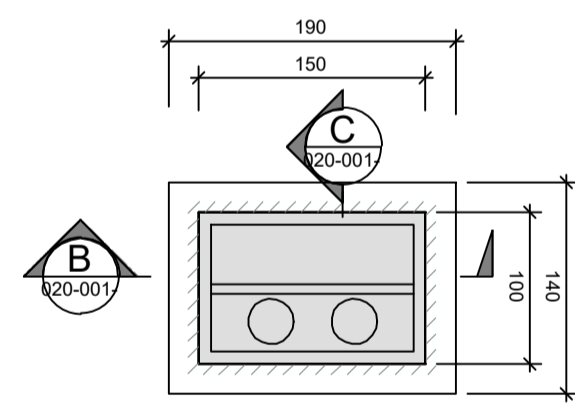
SECTION A-A
SCALE: 1 : 25



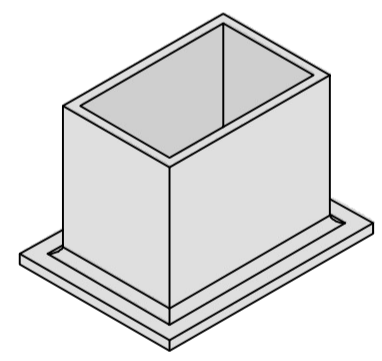
DETAIL 2
SCALE: 1 : 20



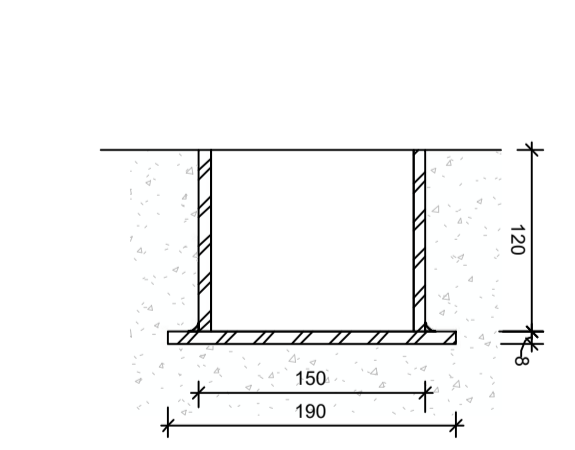
HINGE MOUNT DETAIL
SCALE: 1 : 10



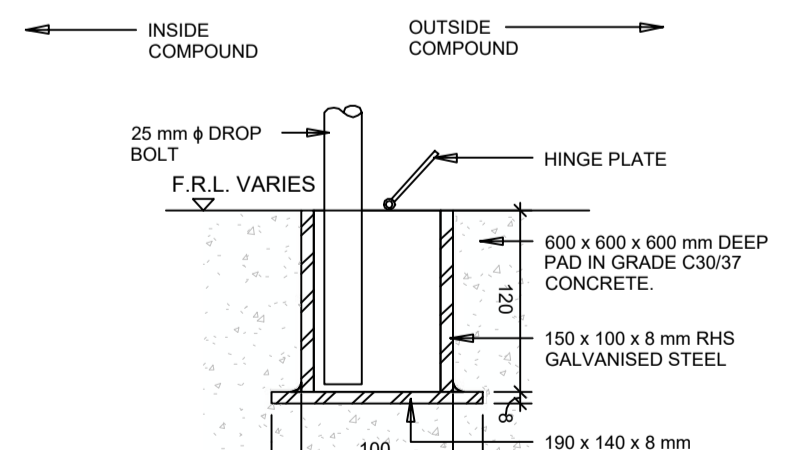
PLAN - BOLT RECEIVER
SCALE: 1 : 5



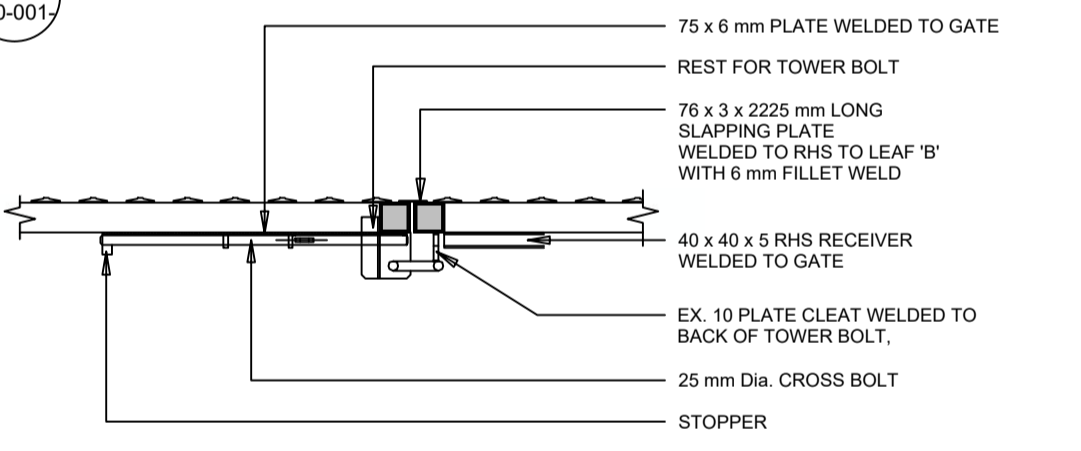
ISOMETRIC VIEW OF DROP BOLT RECEIVER
SCALE: 1 : 5



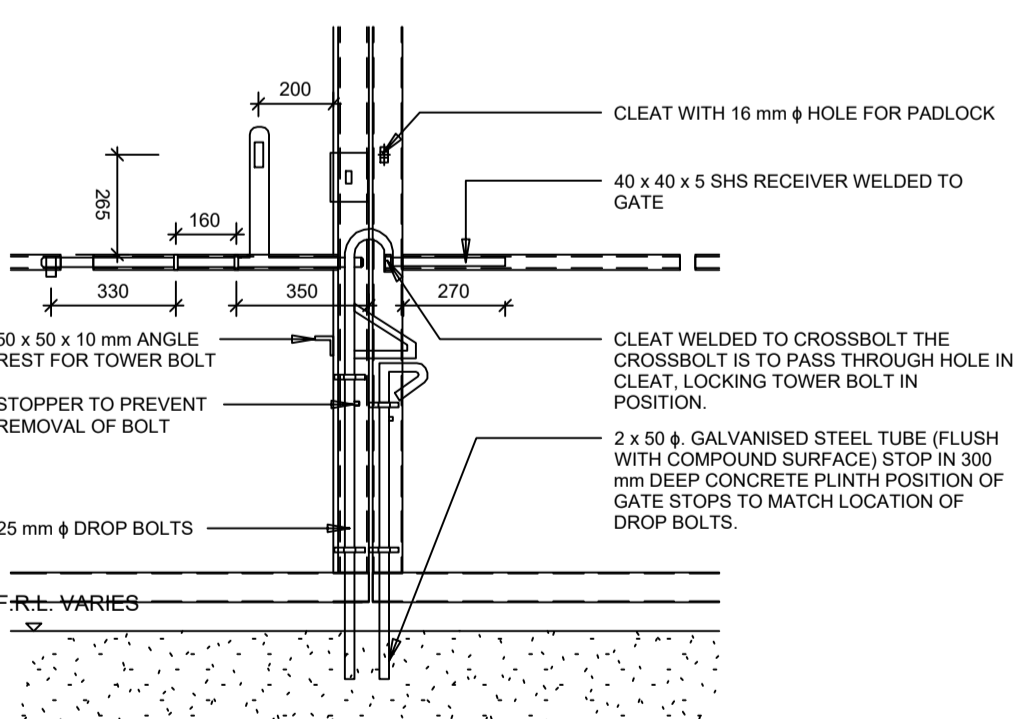
SECTION B-B
SCALE: 1 : 5



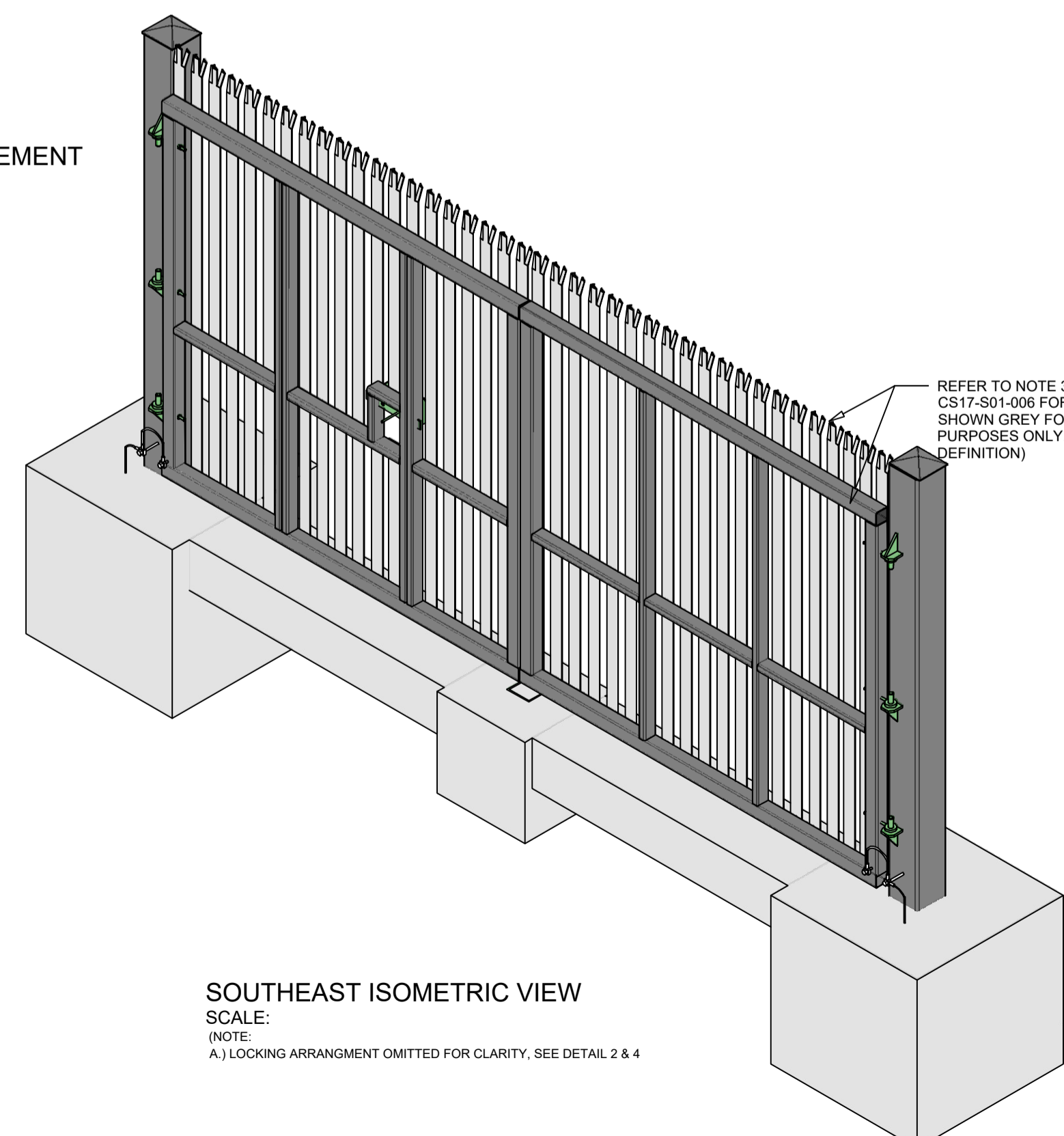
SECTION C-C
SCALE: 1 : 5



DETAIL 3 - PLAN VIEW SHOWING LOCKING ARRANGEMENT
SCALE: 1 : 20



DETAIL 3 - ELEVATION SHOWING LOCKING ARRANGEMENT
SCALE: 1 : 20



SOUTHEAST ISOMETRIC VIEW
SCALE: 1 : 10
(NOTE: A.) LOCKING ARRANGEMENT OMITTED FOR CLARITY. SEE DETAIL 2 & 4

- NOTE:**
- 1.) THIS DRAWING IS NOT TO BE SCALED.
 - 2.) GALVANISING TO BE IN ACCORDANCE WITH I.S. EN ISO 1461.
 - 3.) BLACK POWDER COATING TO BE IN ACCORDANCE 5. WITH B.S. EN 13438. COLOUR TO ARCHITECTS DETAILS.
 - 4.) PALES TO BE TRIPLE POINTED & SPLAYED, AND WELDED TO RAILS IN ACCORDANCE WITH CL. 5.1 OF BS 1722-12.
 - 5.) GAP BETWEEN PALES AND BETWEEN PALES AND RSJ TO BE NOT GREATER THAN 50 mm.
 - 6.) MINIMUM HEIGHT OF GATES ON EITHER SIDE OF COMPOUND IS TO BE 2600 mm.
 - 7.) IN AREAS OF MADE-UP GROUND, ADDITIONAL CONCRETE TO BE USED IN BASE QUANTITY TO BE APPROVED BY THE ENGINEER IN ADVANCE.
 - 8.) CONCRETE TO BE GRADE C30/37.
 - 9.) THE GATE IS TO BE CONSTRUCTED IN ACCORDANCE WITH B.S. 1722 PART 12.
 - 10.) TOP OF PALES TO GATES TO BE LEVEL WITH TOP OF PALES TO FENCE.
 - 11.) WASHERS TO BE USED ON ALL NUTS.
 - 12.) POST SUPPORTS TO BE POSITIONED APPROPRIATELY AROUND THE SITE.
 - 13.) PALISADE FENCE TO BE EARTHED AT EVERY CORNER POST AND POST OF AT LEAST 10m INTERNAL IN BETWEEN.

REFER TO DRAWING CAP-CSE-00-XX-DR-C-2106 FOR FENCING LAYOUT

Rev	Description	Drawn	Checked	Date
P03	SID ISSUE	DM	PM	03.11.2020
P02	EIRGRID REVIEW	DM	PM	13.10.2020
P01	FOR DISCUSSION	DM	PM	28.08.2020

Clifton Scannell Emerson Associates Limited
Consulting Engineers,
Seaforth Lodge,
Castledawson Avenue,
Blackrock, Co. Dublin,
Ireland, A94 P768
T: +353 1 288 5006
F: +353 1 283 3466
E: info@csea.ie
W: www.csea.ie

CAP DEVELOPMENTS LLC

Client: **OLDBRIDGE 110KV SUBSTATION**

Project: **PROPOSED GATE DETAILS**

Dwg. Title: **SHEET 1**

Drawn By: **DM** Date: **OCTOBER 2020** Scale: **1:30 @ A1** Job No.: **20_057**

Checked By: **PM** Scale: **1:30 @ A1** CSEA Job No.: **DUB062HV - CSE - 00 - XX - DR - C - 2154**

Project Code: **S2** Originator: **SUITABLE FOR INFORMATION** Zone/Phase: **P03** Level: **PLANNING** Type: **PLANNING** Role: **PLANNING** Dwg. No.: **PLANNING**